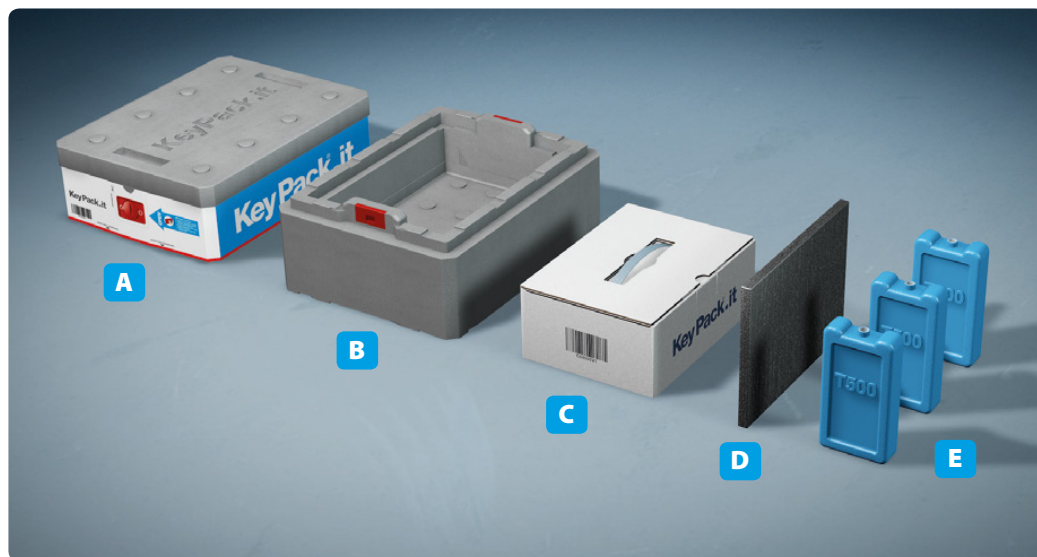


Congratulations in choosing our **Patented System KeyPack**[®] to transport at **controlled temperature** your goods. Follows a brief guide to best use.

COMPONENTS



- A. n.1 EPS lid.
- B. n.1 EPS box.
- C. n.1 drugs cardboard box.
- D. n.1 divider.
- E. n.3 gel packs T500.

GEL PACKS FREEZING

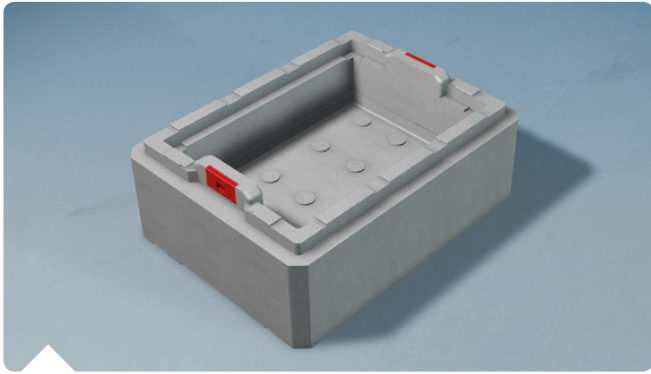


Insert gel packs in freezer at a temperature of **-20°C/-25°C** horizontally for **48 hours**.

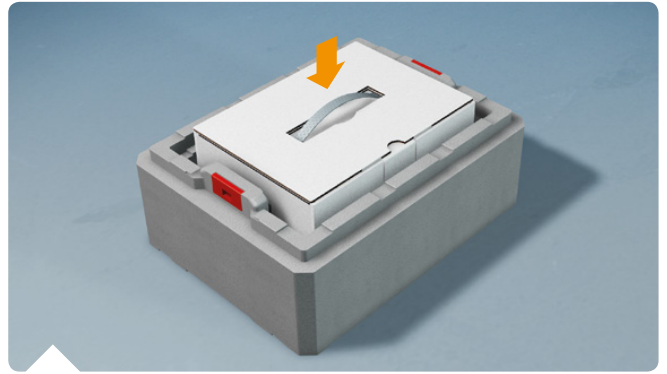
-20°C / -25°C for 48h

PLEASE NOTICE: Utilise only **specified** gel packs.
For further info or assistance on Freezing contact our **Support Service** at:
support@keypack.it

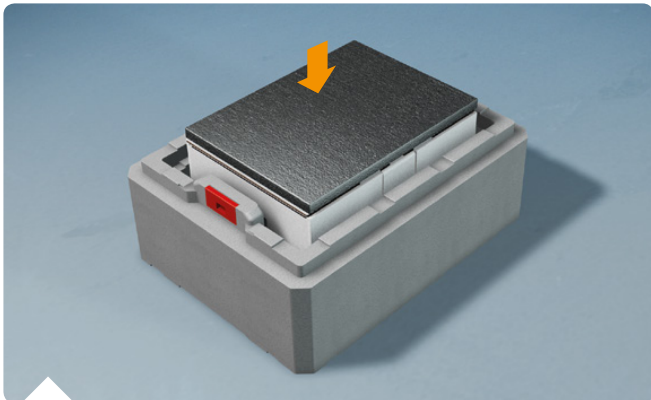
■ THERMAL BOX 34250 ASSEMBLY



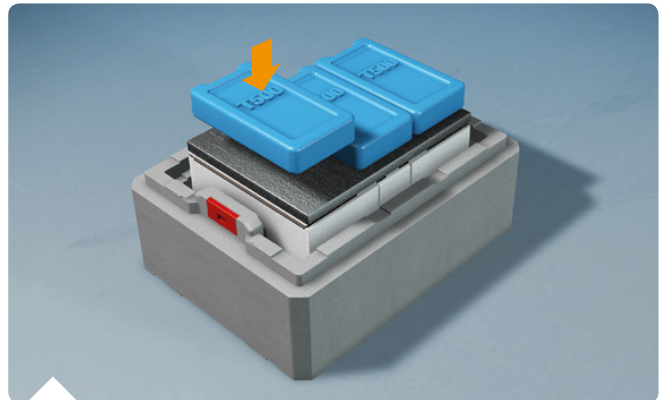
To achieve an **ideal KeyPack® EPS container assembly** box and lid must be at utilization time, at a temperature **non exceeding 10°C**.



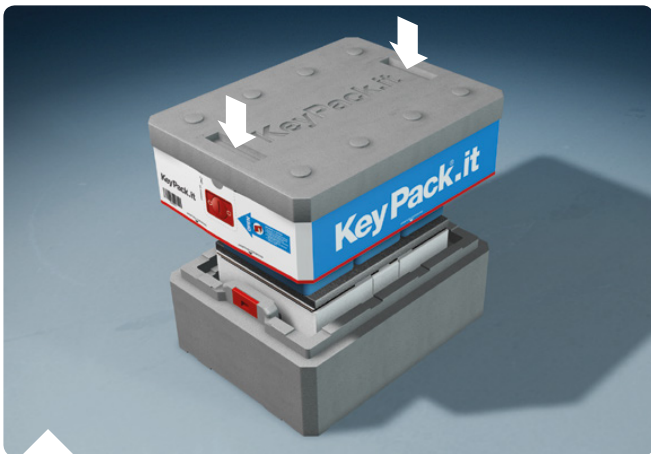
1. Once the drug cardboard box is filled, it can be introduced in the EPS box.



2. Position the divider sheet on drug container box.



3. Put gel packs (frozen and stabilized) on top of divider sheet.



4. Put lid on EPS box and push down.



5. A double click will confirm the safety systems blockage.

At this point the thermal container is operating. It will not be possible to open it unless breaking both guarantee seals, as indicated by two blue arrows.

GEL PACKS CHART

COD. 34250

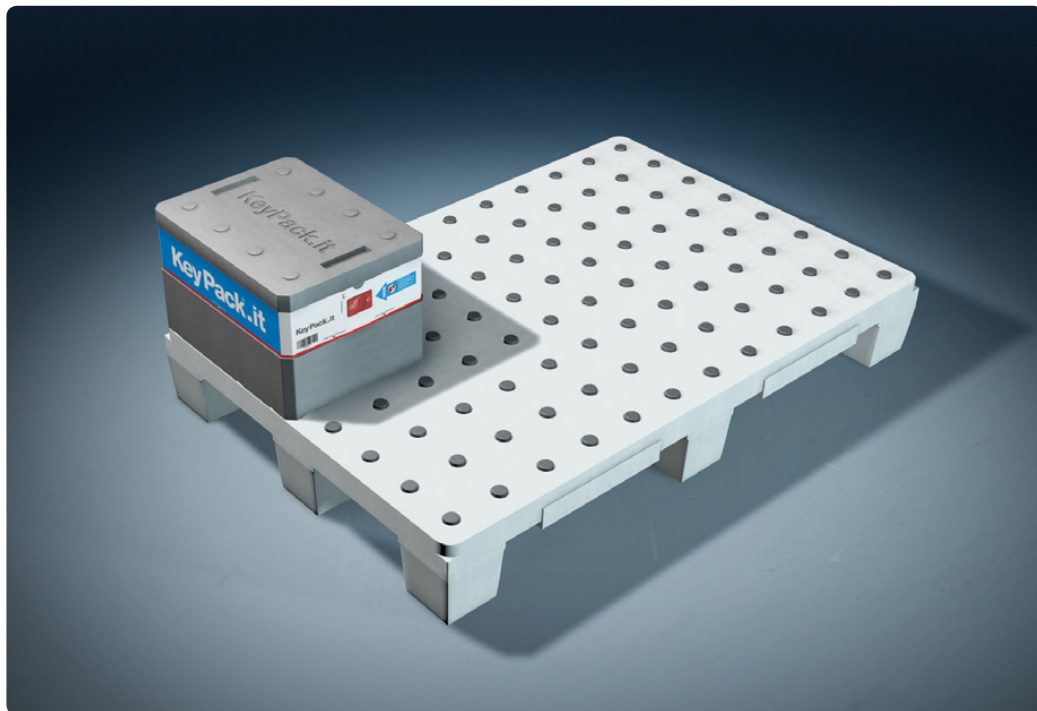
3 gel packs T 500

NOTICE

The controlled internal temperature will be determined and subject to the **correct gel packs insertion**, referring both to the **correct quantity** and proper **freezing and stabilization** (see the previous page). Please comply to the Gel packs chart on the left.

KeyPack[®] System innovation follows through into logistic.

■ **THE COMPLETE SYSTEM** a short guideline



- Assembled container positioning on EPS pallet.



- Pallet ready for delivery.

Discover all exclusive advantages of the whole **System** on our website www.keypack.it